

Chris Hudson

Connectivity Director – WM5G

Regional Showcase West Midlands



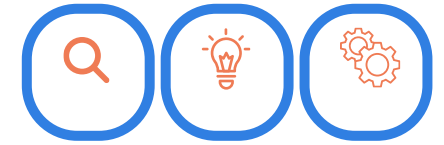
This is Way More than a

Spotlight on WM5G Connectivity in the West Midlands

Presented by Connectivity@WM5G



Barrier Busting - Mobile CONNECTIVITY



shutterstock.com - 715797242

SUPPORTING LOCAL AUTHORITIES

Providing guidance and documentation to support Wayleave negotiation, highways permitting and traffic management.

BRINGING INWARD INVESTMENT

Stimulating the fibre market to create greater inward investment, ensuring multiple providers are available across the region

STANDARDISING APPROACHES

WM5G utilize standardized agreements and processes for use by the local authorities and Industry.

ACCELERATING CONNECTIVITY

Fibre connectivity has fallen behind across the West Midlands, WM5G are targeting areas for acceleration with the Local Authorities and Industry deployments.



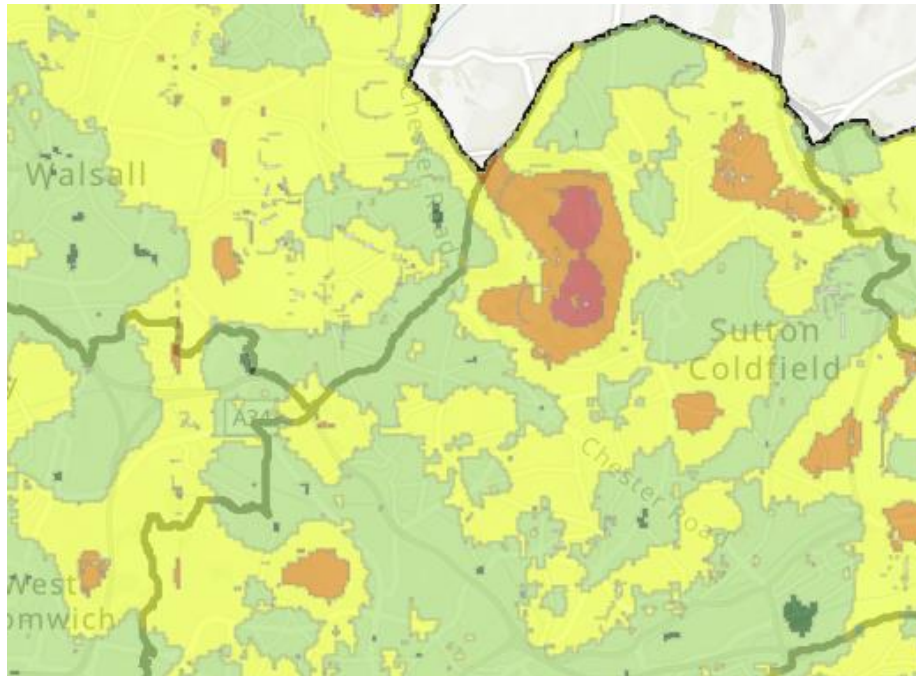
Mapping the mobile connectivity landscape

CONNECTIVITY



COLLECTING AND DISPLAYING ASSET DATA

We have worked with our Local Authorities to capture all buildings, land and lamppost data that could be used to host mobile masts which we can overlay with the Umlaut data we own



4G coverage = Green - good, Red - bad

SHARING DATA WITH INDUSTRY

Our connected map has Ofcom, Umlaut and our own drive testing information in it, giving several layers of coverage and performance analysis which we can then share with Towerco's and MNO's for intervention

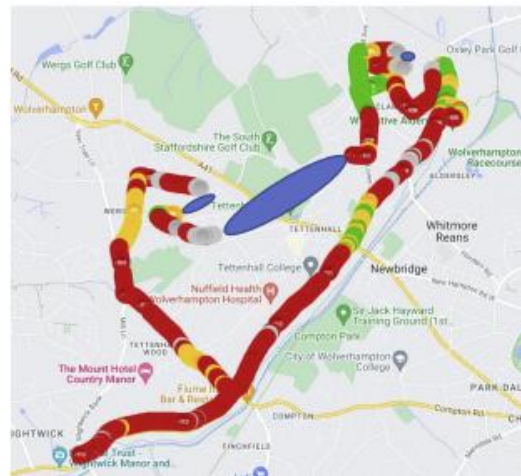


DRILLING DOWN INTO CONNECTIVITY ISSUES

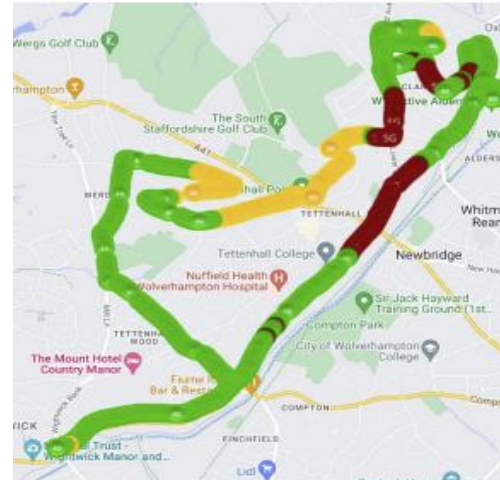
CONNECTIVITY



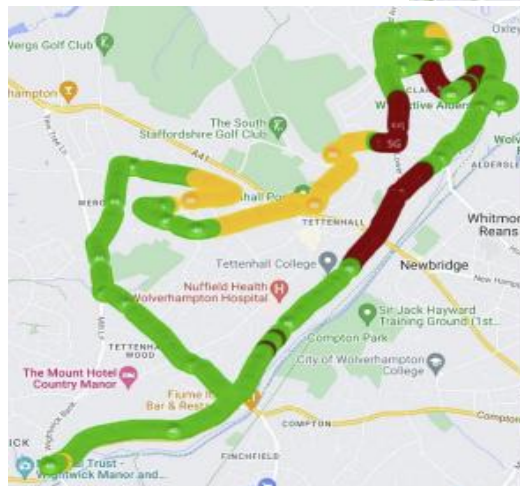
A route in Wolverhampton identifying an area requiring improvement by all Operators



4G or 5G Signal strength



Network type – 3G, 4G, 5G



Throughput - Mbps

UNDERSTANDING HOW CONNECTED WE ARE

WM5G now have the capability to check mobile coverage, capacity and throughput to a detailed level

COLLECTING THE DATA

Walk surveys or drive surveys can be carried out to collect the data for any location, for all 4 mobile operators

ANALYSING THE DATA

Network type (4G, 5G, etc), signal strength, upload and download speeds can all be measured with great accuracy

MAKING INTERVENTIONS

Knowing the detailed information can inform the use of mobile networks for resilience backup, or indicate where new indoor or outdoor solutions are needed



Connected Map CONNECTIVITY



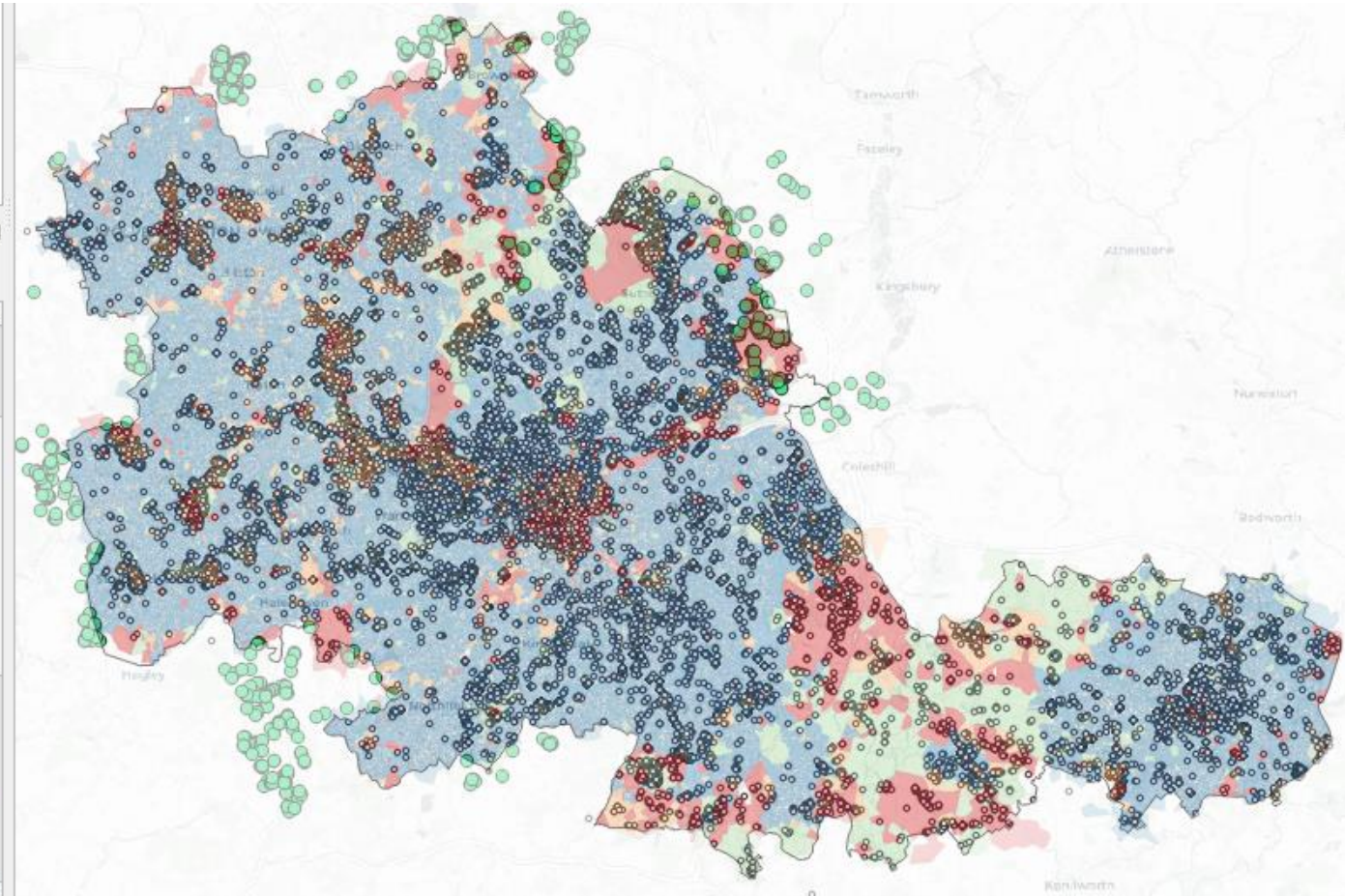
Develop and Launch the Broadband data into our Map. Completed January 2024

- BDUK OMR data is included for both May 23 and September 23.
- Thinkbroadband data on speed availability to the residents.
- Eligible Voucher “Go List” data
- WMCA boundary information.
- Overlaid on to the Mobile data
- Including the Connected Nations data

XYZ Tiles
WCS
WFS / OGC API - Features
ArcGIS REST Servers

Layers

- ThinkBroadband Fastest Download
 - 0 - 30
 - 30 - 80
 - 80 - 100
 - 100 - 330
 - 330 - 8000
- Eligible premises 'Go List'
- OMR Data May 23
 - Gigabit Under Review
 - Gigabit White
- OMR Data Sep 23
 - Gigabit Black
 - Gigabit Grey
 - Gigabit Under Review
 - Gigabit White
- OS AB Premium DCIA 2021-0
- osopenuprn_202312_DCIA
- OS wmca_government_land
- DCIA Land and building assets





Current Coverage - Fibre

CONNECTIVITY



02/01/2024						
	Full Fibre	Gigabit	Alt Net FTTP	Openreach FTTP	VMo2 cable	Who has network in the area
Birmingham	60.11%	95.28%	12.39%	52.66%	84.72%	Openreach, VMo2, brsk, ITS Technology Group, 4th Utility, Hyperoptic, Lit Fibre, Grain Connect, Glide,
Coventry	95.09%	97.97%	83.61%	77.67%	76.83%	Openreach, VMo2, City Fibre, Hyperoptic, Glide
Dudley	39.13%	95.10%	20.24%	21.20%	91.16%	Openreach, VMo2, brsk, Hyperoptic, 4th Utility, ITS Technology Group, Urfibre
Sandwell	55.51%	92.55%	14.61%	48.49%	80.79%	Openreach, VMo2, Netomnia, Exascale, ITS Technology group, Glide
Solihull	66.42%	93.81%	47.25%	54.31%	82.29%	Openreach, VMo2, City Fibre, Glide
Walsall	55.88%	90.66%	4.18%	52.99%	77.49%	Openreach, VMo2, Netomnia, Lit Fibre, Hyperoptic, 4th Utility, ITS Technology group, Glide
Wolverhampton	74.52%	95.43%	63.54%	21.39%	88.73%	Openreach, VMo2, City Fibre, Hyperoptic, ITS Technology Group, Glide
Warwickshire	44.11%	78.63%	13.91%	36.66%	51.95%	Openreach, VMo2, City Fibre, Glide, Voneus
West Midlands	57.12%	85.04%	27.37%	41.11%	60.97%	2,745,633 Premises
WMCA	62.87%	94.62%	28.98%	48.86%	83.46%	7 Core LA areas
UK	60.54%	79.86%	30.06%	39.39%	52.48%	
01/02/2024						
	Full Fibre	Gigabit	Alt Net FTTP	Openreach FTTP	VMo2 cable	Who has network in the area
Birmingham	61.33%	95.31%	12.96%	53.46%	84.68%	Openreach, VMo2, brsk, ITS Technology Group, 4th Utility, Hyperoptic, Lit Fibre, Grain Connect, Glide,
Coventry	95.30%	98.08%	83.95%	77.81%	76.84%	Openreach, VMo2, City Fibre, Hyperoptic, Glide
Dudley	41.66%	95.28%	22.86%	21.36%	91.14%	Openreach, VMo2, brsk, Hyperoptic, 4th Utility, ITS Technology Group, Urfibre
Sandwell	57.53%	92.78%	14.61%	50.82%	80.77%	Openreach, VMo2, Netomnia, Exascale, ITS Technology group, Glide
Solihull	67.14%	93.84%	47.84%	55.16%	82.28%	Openreach, VMo2, City Fibre, Glide
Walsall	59.08%	91.50%	5.74%	56.10%	77.45%	Openreach, VMo2, Netomnia, Lit Fibre, Hyperoptic, 4th Utility, ITS Technology group, Glide
Wolverhampton	76.38%	95.60%	63.41%	29.20%	88.67%	Openreach, VMo2, City Fibre, Hyperoptic, ITS Technology Group, Glide
Warwickshire	45.35%	78.98%	14.70%	37.99%	51.93%	Openreach, VMo2, City Fibre, Glide, Voneus
West Midlands	58.75%	85.56%	28.15%	43.13%	61.08%	2,745,633 Premises
WMCA	64.46%	94.91%	29.76%	50.59%	83.50%	7 Core LA areas
UK	62.04%	80.49%	30.77%	40.97%	52.71%	



Fibre initiatives

CONNECTIVITY



- We are Pushing LAs to be involved in trails around streetworks flexi-permits.
- Birmingham and Black Country Lot 35 update. Currently 66k white premises (Sep 23 OMR data) of which approximately 45% are MDU's. More concerning are the 85.8k premises under review which are in a state of unknown. We are pushing BDUK for clarity on these.

Area	Total number of UPRNS	Premises Classification			
	OMR Data Sep 23	White	Under Review	Grey	Black
Birmingham	522,429	28087	22540	211400	260406
Dudley	148,888	3591	4020	38645	102632
Sandwell	149,574	7884	9198	73932	58561
Wolverhampton	125,679	2661	12459	89958	20601
Walsall	128,805	3075	15990	58121	51619
Solihull	102,007	6417	4561	48446	42584
Coventry	172,562	14647	13775	52505	91635
	1,349,944	66,362	82,543	573,007	628,038



PSTN Switchover CONNECTIVITY



- We have a weekly call with Manchester and London and are working on solutions.
- We know Telecare is the key concern but it affects businesses and residents too.
- We surveyed our 7 LA's on their PSTN switch-off readiness.
- We have also engaged with both INCA and Openreach.
- Today I have been at an event in London at Tech UK's offices discussing this topic.
- A letter has been sent to all 10 Metro Mayor's looking to get collective support to lobby Central Government for support and potentially funding.

To make the most of your techUK website experience, please [login or register for your free account here](#).

[Sign in / Register](#)
[Join techUK](#)
[Contact us](#)
[Search](#)

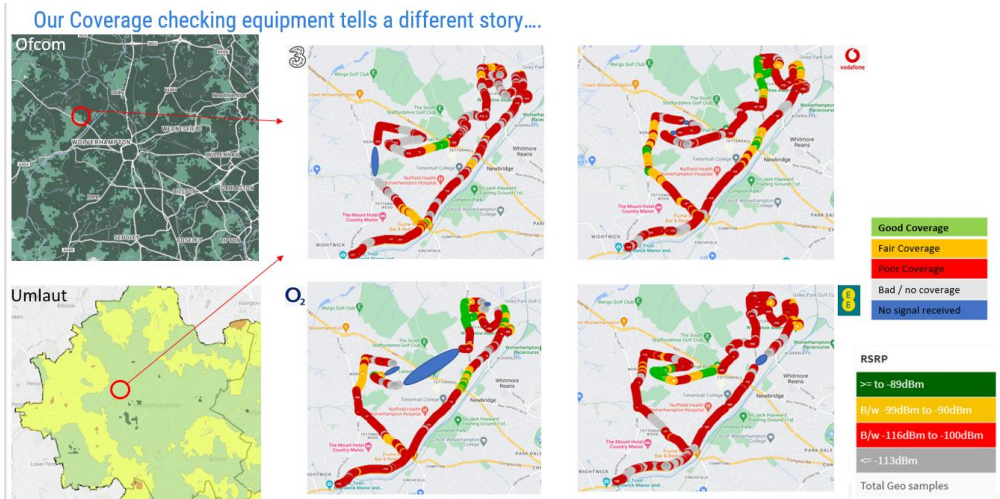
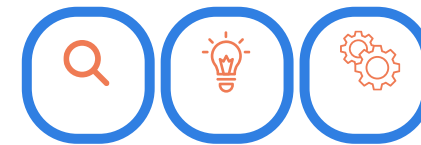
techUK
 FOR WHAT COMES NEXT

[Shaping policy](#)
[Accelerating innovation](#)
[Developing markets](#)
[Who we are](#)
[What we deliver](#)

You're here: [The UK's technology trade association](#) > [What we deliver](#) > [Events calendar](#) > The Digital Landline Switchover and Local Authorities

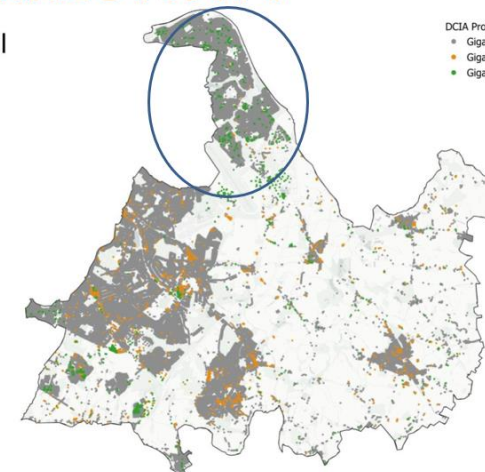
Hybrid Free
The Digital Landline Switchover and Local Authorities
 10am – 1pm
 5 March 2024
 London and Online
 techUK, 10 St Bride Street, London, EC4A 4AD





Solihull CONNECTIVITY

Solihull



The area in North Solihull has an Openreach network of direct buried cable. Chelmsley Wood, Kingshurst & Fordbridge and Smiths Wood make up North Solihull. Due to this it is very expensive to upgrade. While some properties have access to Virgin Media the properties that do not are being left behind. Openreach currently have no plans to upgrade the area. City Fibre announced the area but have since pulled back to concentrate on Project Gigabit works leaving this area and premises stranded without full fibre gigabit connectivity. This area of Solihull has the highest levels of deprivation in the Borough.

The MP for Meriden (which covers Chelmsley Wood) is Saqib Bhatti

Meeting outputs:

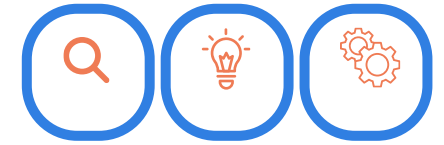
Evidence base for urban market failures: GMCA and WM5G to develop consolidated insights outlining the specific reasons why (and evidence) different areas of their regions that have gigabit broadband white-spots – working closely with Kieran and Jesam to distinguish between planning and other deployment cost barriers so as to feed into DSIT business case for target urban market interventions. Kick-off meeting to be diarised to agree objectives, approach (incl. methodology & timing) and outputs by end of March.

Mobile coverage data measurement: Jamie to introduce Chris & Helen with the team leading coverage improvement project in DSIT in the next few days so that we can support the design and delivery of an improved solution.

Chris and Helen to share with Jessam the findings on the cost and planning challenges of using telegraph poles as well as some of the community feedback from the public engagement meetings.

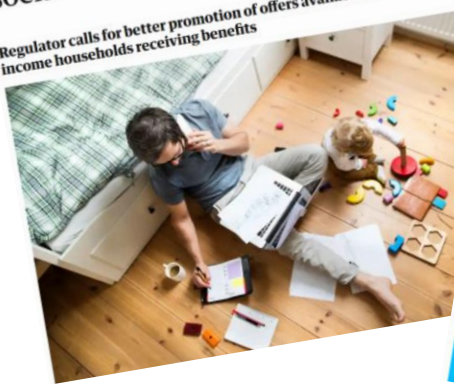


Other West Midlands support **CONNECTIVITY**



Millions missing out on broadband social tariffs in UK, says Ofcom

Regulator calls for better promotion of offers available to low-income households receiving benefits



Millions of families miss out on cheap broadband

1 day ago



Broadband firms 'must do more to promote social tariffs'

9 April 2022



SCR funding for SWBH – Exemplar hospital



Supporting residents and industry at community engagement events – “Polemageddon”





Thank You