

BEACON-5G

Adnan Aijaz



Department for
Digital, Culture,
Media & Sport

**UK
5G**

**Innovation
Network**

BEACON-5G* Project in a Nutshell

- Aims to fill technological gaps in building and commercializing 5G systems based on open interface solutions.
- Addresses crucial challenges for making 5G Open RAN systems as efficient, performant, and secure/trustworthy as those based on conventional deployments.
- Main deliverable is development and technology trial of a high TRL O-RAN-compliant 5G system with new capabilities for meeting future dense urban requirements in local/private as well as public/carrier deployments.
- Paves the way toward new business models and facilitates new players in the value chain, ultimately making the Open RAN market more diverse/competitive.

TOSHIBA

THALES

ATTOCORE

Accelleran

Benetel™

Phluido

EFFNET

Coventry University

South Gloucestershire Council



Canolfan Ecsbloetio
Ddigidol Genedlaethol
National Digital
Exploitation Centre

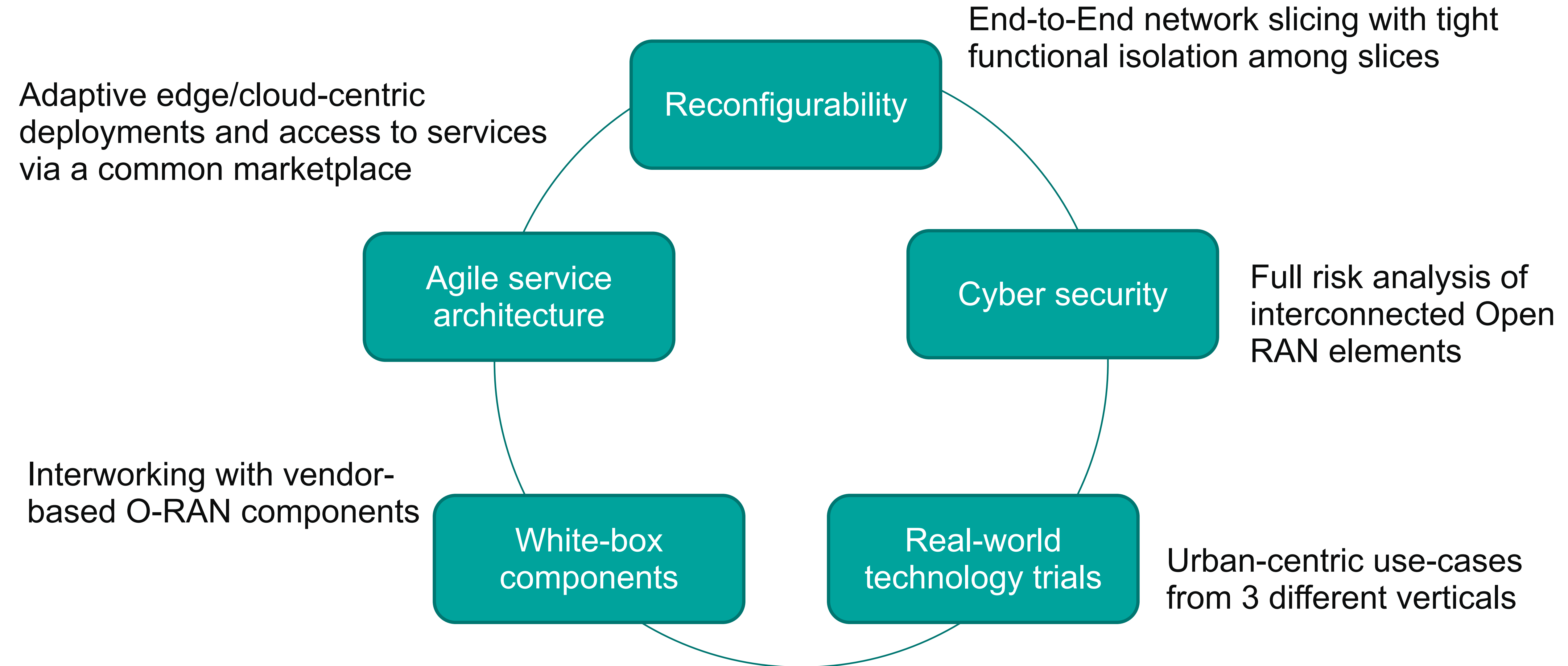
Project Lead: Toshiba
Funded Partners: Toshiba, Thales, Attocore, Coventry University, & South Gloucestershire Council
Suppliers: Bentel, Effnet, Phluido, & Accelleran

* **Building REconfigurable, Agile, SeCure, and TrustwOrthy Systems for OpeNness in 5G**

BEACON-5G: Impact on the Market

- Competitive edge for 5G Open RAN solutions by (a) bringing conventional 5G capabilities (e.g., network slicing) and (b) building new capabilities (e.g., software platforms) for Open RAN systems.
- Contributing toward maturity of 5G Open RAN systems by (a) end-to-end system integration, (b) horizontal and vertical technology trials in real-world environments, and (c) better understanding of cyber security vulnerabilities.

BEACON-5G: Key Innovations



Seeking Collaboration Opportunities with

Projects developing Open RAN system components (particularly RUs and DUs)

Projects focusing on RIC and its role for network management

Projects investigating public-private interworking

MNOs and NHOs

...

Contact: adnan.aijaz@toshiba-bril.com