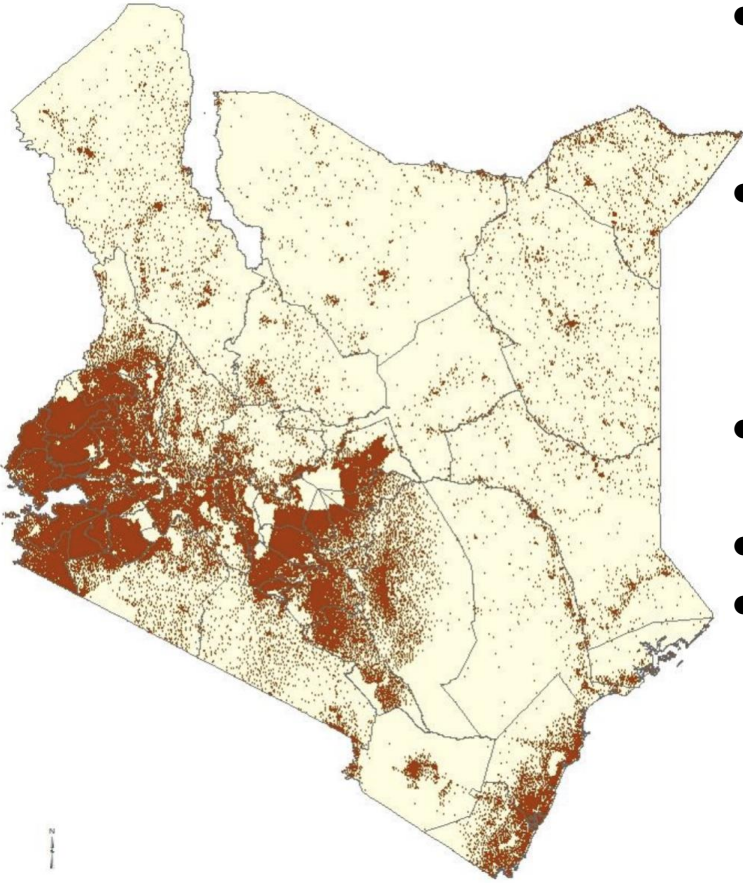




## Shared Spectrum for Community Networks in Kenya



# Key Statistics : Kenya



**Map of Kenya's Population Distribution**  
Source: Kenya National Bureau of Statistics, 2020

## Inclusive Digital Transformation??

- **22%** of Kenyans used digital services to access only basic digital services limited to sending and receiving money, buying airtime and data using mobile money.
- **85%** of rural residents with non-primary education, **45%** people with disabilities and **44%** of older people across all geographies are basic digital services users or non-users.
- **35%** of women are advanced digital services users, compared to **54%** of men.
- Inequalities accelerated by the COVID-19 Pandemic.
- A number of key challenges limit basic digital services users to the use of mobile money:
  - **69%** of basic digital services users have no access to the internet,
  - **95%** have only basic phones,
  - **54%** cannot pay for internet connection,
  - **69%** need help to use digital services, and
  - **71%** who use shared devices are allowed less time than other family members to use digital services.

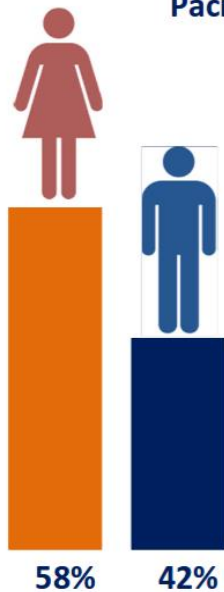
**Source:**

[https://digitaleconomy.ke/assets/download/Kenyas\\_Digital\\_Economy\\_Full\\_report\\_Aug\\_2021.pdf](https://digitaleconomy.ke/assets/download/Kenyas_Digital_Economy_Full_report_Aug_2021.pdf)



Source: "Working Together to Connect the World by 2020 – Reinforcing Connectivity Initiatives for Universal and Affordable Access", available from: [www.broadbandcommission.org](http://www.broadbandcommission.org).

The Gender Gap is most pronounced in Africa, the Arab States and Asia-Pacific



Half have a GNI/capita of < US\$ (PPP) 6,500, a large proportion of which are located in Africa and Asia-Pacific



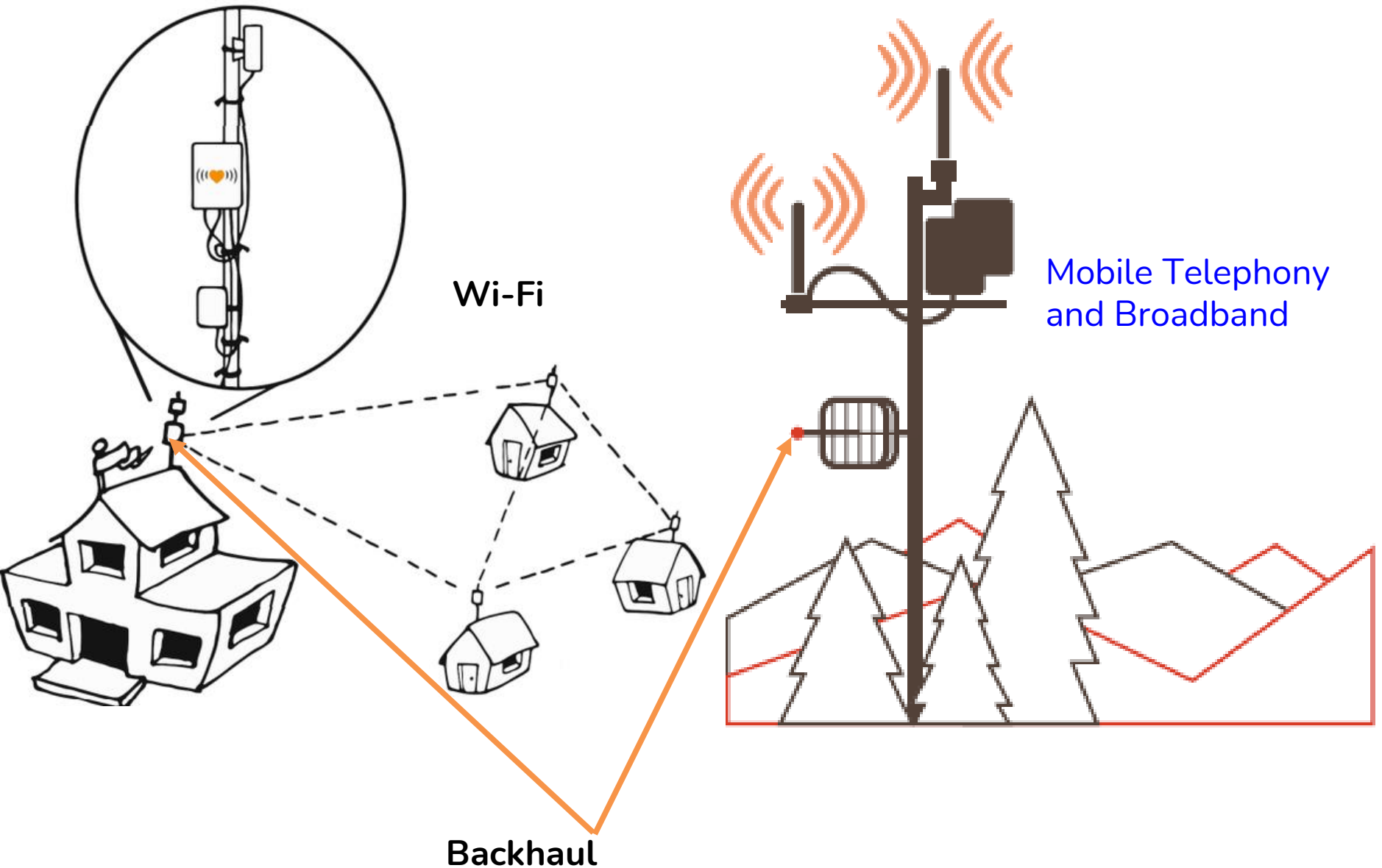
The elderly have much lower Internet penetration levels than the overall population across all regions



Individuals with low educational attainment often remain unconnected across all regions



# Diversity in Access Technologies for Community Networks



# Community Networks Framework & Social, Economic Impact



## Community Network Service Provider

### Licensing

- ★ For Cooperative societies, Community-Based Organizations and Non-Governmental Organisations.
- ★ Limited in geographic scope to a division (sub-county).
- ★ Licence term of 10 years with simplified application requirements and fit-for-purpose quarterly compliance reporting.

### Spectrum

- ★ Fee waiver for access to spectrum.
- ★ Establishment of a regulatory sandbox for localised spectrum access for small operators.
- ★ Development of a framework for dynamic assignment of IMT spectrum.

- Local control over how the network is established and operated.
- Attention to gender & age gaps and community needs → Covid19 response
- Fostering the digital ecosystem: production of content, skills, etc.
- Lower costs and retention of funds and skills in the community.

# Thank you

**Head Office**

CA Centre  
P.O.Box 14448  
Nairobi 00800

**Mobile: 0703042000**  
**Email: [info@ca.go.ke](mailto:info@ca.go.ke)**

**CA Western Regional Office**

1st Floor KVDA Plaza  
P.O.Box 2346  
Eldoret 30100

**Mobile: 0703042105**  
**Email: [wro@ca.go.ke](mailto:wro@ca.go.ke)**

**CA Coast Regional Office**

3rd Floor, NSSF Building  
P.O.Box 8041  
Mombasa 80100

**Mobile: 0703042152**  
**Email: [cro@ca.go.ke](mailto:cro@ca.go.ke)**

**Central Regional Office**

Ground Floor, Advocates Plaza  
P.O Box 134  
Nyeri 10100

**Mobile : 0703042181**  
**Email : [cero@ca.go.ke](mailto:cero@ca.go.ke)**

**Nyanza Regional Office**

2nd Floor Lake Basin Mall,  
P.O Box 2016  
Kisumu 40100

**Mobile: 0703042130**  
**Email: [nro@ca.go.ke](mailto:nro@ca.go.ke)**